

### WALL-MOUNTING BOXES

GW22471



#### WALL-MOUNTING BOXES FOR TOP SYSTEM PLATES

Code	Suitable for	Colour	For trunking dim. (mm)	For conduits max Ø (mm)	Pack Carton
GW 22 471	1/2/3 gang TOP SYSTEM	Cloud white	14x8.5 30x13 20x10	16 - 20	3/60
GW 22 472	4 gang TOP SYSTEM	Cloud white	14x8.5 30x13 20x10	16 - 20	3/30

CHARACTERISTICS: fitted for fixing the earth terminal GW26407.

GW24006



#### WALL-MOUNTING BOXES FOR COMPACT SELF-SUPPORTING PLATES

Code	Suitable for	Colour	For trunking dim. (mm)	For conduits max Ø (mm)	Pack Carton
GW 24 006	1/2/3 gang COMPACT	Cloud white	14x8.5 30x13 20x10	16 - 20 - 25	3/60
GW 24 007	3+3 gang COMPACT	Cloud white	14x8.5 30x13 20x10	16 - 20 - 25	3/30

CHARACTERISTICS: fitted for fixing the earth terminal GW26407.

SYSTEM RANGE

NP40432



#### UNIVERSAL DEVICE BOXES FOR SUPPORTS/PLATES - STANDARD ITALIAN

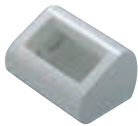
Code	No. gangs	Configuration	Installable support./plates	Colour	Pack Carton
NP 40 432	3		Central axis 83.5 mm	White RAL 9010	10
NP 40 438	4		Central axis 108.5 mm	White RAL 9010	10
NP 40 444	6+6 gang	Overlapping	Central axis 163 mm	White RAL 9010	5
NP 40 434	3		Central axis 83.5 mm	Anthracite RAL 7021	10
NP 40 440	4		Central axis 108.5 mm	Anthracite RAL 7021	10
NP 40 446	6+6 gang	Overlapping	Central axis 163 mm	Anthracite RAL 7021	5

Suited for skirting and framing trunking.

CHARACTERISTICS: in combination with the relevant support allows the PLAYBUS/SYSTEM/CHORUS range of plates to be installed.

### FREE-STANDING AND WALL-MOUNTING CONTAINERS

GW24018



#### FREE-STANDING AND WALL-MOUNTING CONTAINERS

Code	Description	Colour	Outer dim. LxHxD (mm)	Pack Carton
GW 24 018	4 gang	Cloud white	126x91x60	1/30
GW 24 019	4 gang	Toner black	126x91x60	1/30
GW 24 020	6 gang	Cloud white	181x91x60	1/20
GW 24 021	6 gang	Toner black	181x91x60	1/20

ACCESSORIES SUPPLIED: cable gland (for max Ø 10 mm cable), cable clamp.

### SUPPORTS

GW24201



#### GREY INSULATING SUPPORTS TO INSTALL TOP SYSTEM / VIRNA PLATES ON RECTANGULAR BOXES

Code	Description	Configuration	Fixing	Pack Carton
GW 24 201	3 gang		2 screws (included)	10/300
GW 24 202	4 gang		2 screws (included)	10/150
GW 24 230	6 gang		4 screws (included)	10/100
GW 24 240	4+4 gang	Overlapping	4 screws (included)	10/60
GW 24 241	6+6 gang	Overlapping	4 screws (included)	10/40

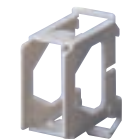
GW24262



#### GREY INSULATING SUPPORTS TO INSTAL TOP SYSTEM / VIRNA PLATES ON SQUARE/RECTANGULAR BOXES

Code	Description	Fixing	Pack Carton
GW 24 262	2 gang	2 screws (included)	10/120

GW26409



#### SUPPORTS FOR MOUNTING SYSTEM RANGE COMPONENTS ON DIN RAIL

Code	Description	No. DIN modules	Pack Carton
GW 26 409	1 gang	1.5	5/300
GW 26 410	2 gang	3	5/150